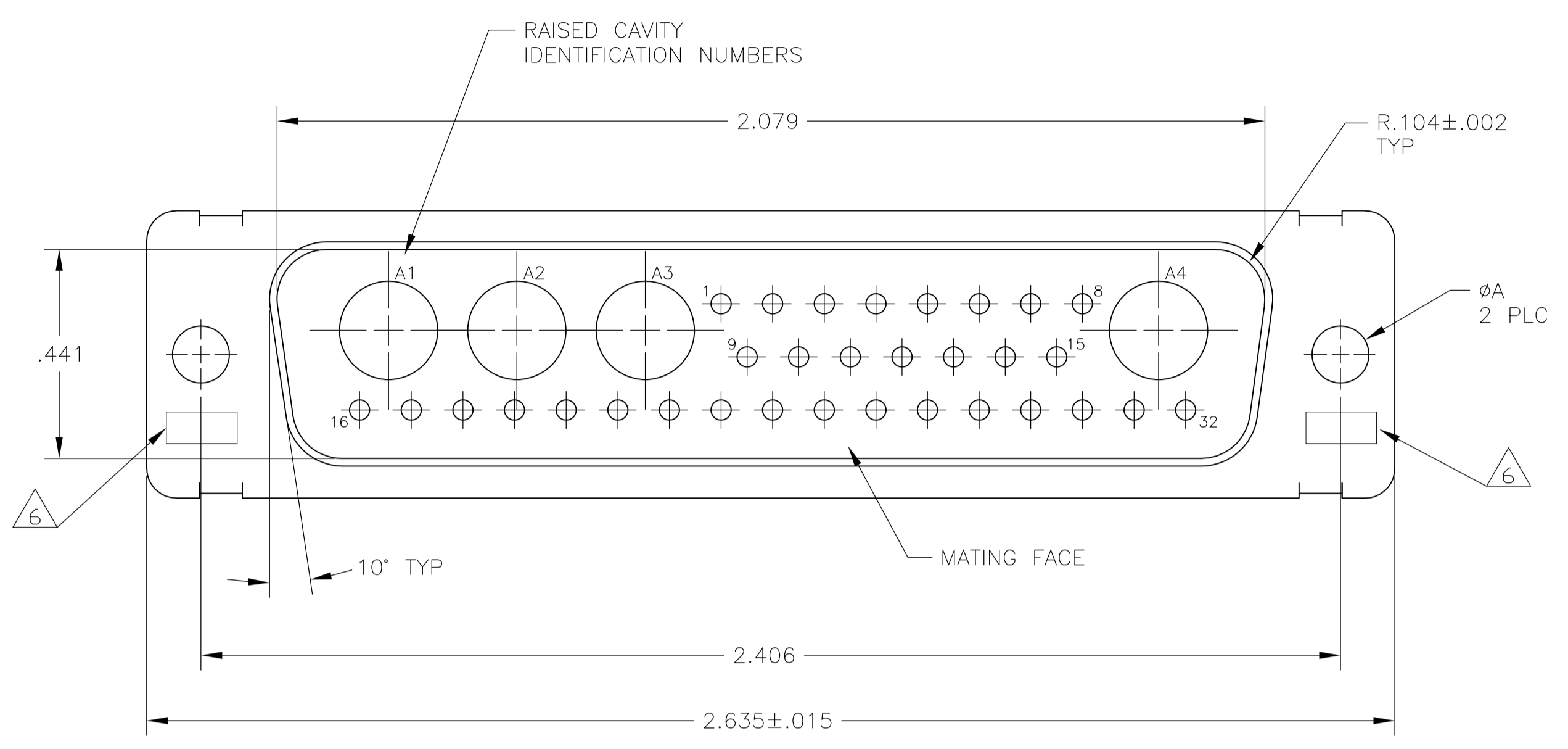
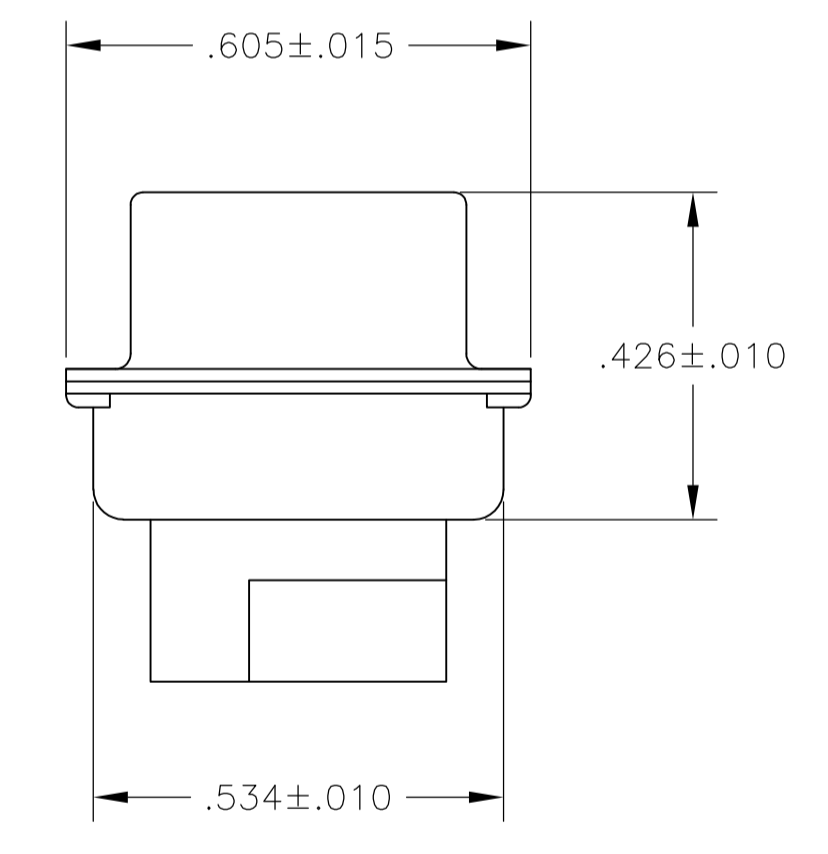
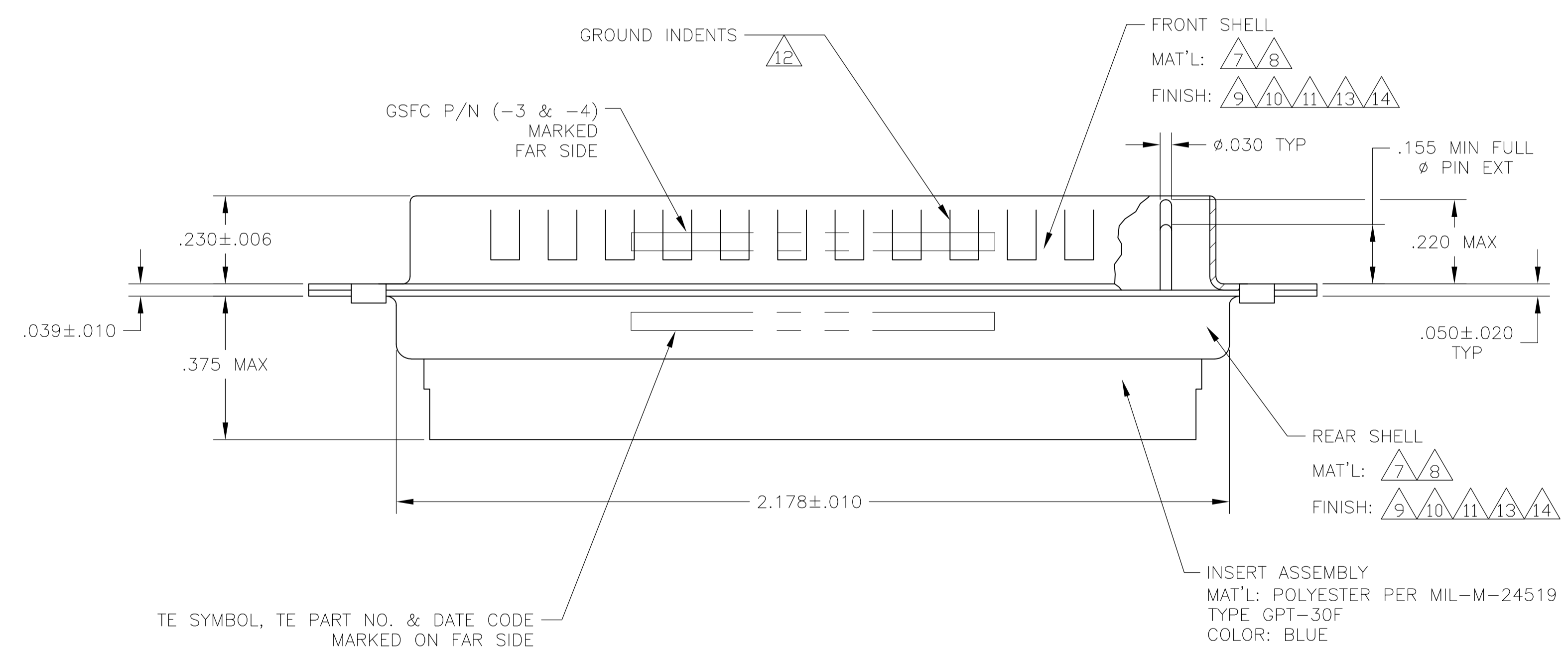


LOC	DIST	REVISIONS				
DF	DO	REV	DESCRIPTION	DATE	DMN	APVD
		K	REV PER ECO 07-014170	6-20-07	CT	DM



- THIS PLUG WILL MATE WITH ANY 36C4, SIZE 5 RECEPTACLE IN AMPLIMITE SERIES.
 - MAXIMUM WIRE INSULATION TO BE USED WITH THIS PLUG IS ϕ .072.
 - THIS CONNECTOR ACCEPTS (4) POWER 8, OR COAX PIN CONTACTS IN POSITIONS A1 THRU A4, PURCHASED SEPARATELY.
 - THIS CONNECTOR ACCEPTS SIZE 20 PIN SIGNAL CONTACTS IN POSITIONS 1 THRU 32, PURCHASED SEPARATELY.
 - INSERTION/EXTRACTION TOOL USED FOR SIZE 20 PIN SIGNAL CONTACTS IS 91067-2.
- \triangle 6 UL/CSA DESIGNATION STAMPED IN THIS AREA, OPTIONAL.
 \triangle 7 STEEL PER ASTM-A-109.
 \triangle 8 BRASS PER MIL-C-50 AND ASTM-B-36 UNS NO. C26000.
 \triangle 9 FINISH: CADMIUM PLATED PER QQ-P-416, TYPE II, CLASS 2.
 \triangle 10 FINISH: GOLD PLATED PER MIL-G-45204 TYPE II, GRADE C, CLASS 1 OVER COPPER PER MIL-C-14550, CLASS IV.
 \triangle 11 FINISH: TIN PER ASTM-B-545, .000200 MIN THK OVER COPPER PER AMS2418, .000100-.000200 THK OR TIN-LEAD 93/7, .000200 MIN THK OVER COPPER PER AMS2418 .000100-.000200 THK.
 \triangle 12 GROUND INDENTS FOR 208744-5 & 5-208744-5 ONLY.
 \triangle 13 FINISH: TIN PER ASTM-B-545, .000200 MIN THK OVER COPPER PER AMS2418 .000100-.000200 THK.
 \triangle 14 FINISH: ZINC PLATE PER ASTM-B-633 .000200-.000400 THK WITH SUPPLEMENTARY CHROMATE (Cr3+).



\triangle 7 \triangle 12 \triangle 13	.120	-	5-208744-5
\triangle 7 \triangle 14	.154	-	5-208744-2
\triangle 7 \triangle 14	.120	-	5-208744-1
\triangle 7 \triangle 11 \triangle 12	.120	-	208744-5
\triangle 8 \triangle 10	.154	311P405-23P-B-15	208744-4
\triangle 8 \triangle 10	.120	311P405-23P-B-12	208744-3
\triangle 7 \triangle 9	.154	-	208744-2
\triangle 7 \triangle 9	.120	-	208744-1
REMARKS	ØA	GSFC P/N	PART NO.

TE SYMBOL, TE PART NO. & DATE CODE MARKED ON FAR SIDE

INSERT ASSEMBLY
 MAT'L: POLYESTER PER MIL-M-24519
 TYPE GPT-30F
 COLOR: BLUE

THIS DRAWING IS A CONTROLLED DOCUMENT.

DIMENSIONS: INCHES	TOLERANCES UNLESS OTHERWISE SPECIFIED:	0 PLC ± -	1 PLC ± -	2 PLC ± -	3 PLC ± .005(0.13)	4 PLC ± -	ANGLES ± 0°30'
--------------------	--	-----------	-----------	-----------	--------------------	-----------	----------------

MATERIAL	FINISH	WEIGHT	SCALE	SHEET	REV
-	-	-	4:1	1 OF 1	K

THIS DRAWING IS A CONTROLLED DOCUMENT. **T. SHUEY** 06-JAN-88
A. EMADI 25-JAN-88
A. EMADI 25-JAN-88
 Tyco Electronics Corporation
 Harrisburg, PA 17105-3608
 NAME: **PLUG ASSEMBLY**
 PRODUCT SPEC: **AMPLIMITE 36C4**
 APPLICATION SPEC: **SIZE 5, COAX MIX**
 SIZE: **A1** CAGE CODE: **00779** DRAWING NO: **208744**
 CUSTOMER DRAWING